

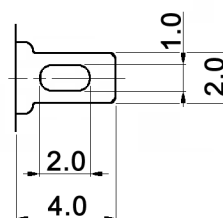


x	Contacts / terminals	Rating	Bushing material
empty	copper alloy, silver plated over nickel	3A, 125V AC	zinc, nickel plated
B	copper alloy, 2µm gold plated over 3µm nickel	min.: 1µA, 20mV DC max.: 25mA, 20V DC	brass, nickel plated

**CIRCUIT DIAGRAM**

Type	Circuit arrangement	
		
MPS 203 Rx	(ON) 3-1 6-4	ON 3-2 6-5

**TERMINAL DETAIL**



**Specifications:**

Contact resistance: 10mOhm max. at 1.5mA, 200µV AC (1kHz)  
 Insulation resistance: 1000MOhm min. at 500V DC  
 Dielectric strength: 1000V AC for 1 minute  
 Mechanical life: 100 000 cycles  
 Electrical life: 25 000 cycles  
 Operating force: 3 +/-1N (306 +/-102gf)  
 Material:  
 Locating ring: steel, zinc plated  
 Tooth washer: carbon tool steel, zinc plated  
 Hex nut: steel, nickel plated  
 Plunger: brass, nickel plated  
 Frame: stainless steel  
 Case: diallyl phthalate resin, black



Tolerances: ±0.2mm	Date	Name	<h1>MPS 203 Rx</h1>	<h2>30 23 07</h2>	Page	
		02/11			dr	1/1
					<b>knitter-switch</b>	
Materials	05/12	dr				
Modifications	Date	Name				